

COMSPHERE[®] 3821PLUS

SOFTWARE-DEFINED (SD) 33.6 Kbps V.34 MODEM CARD

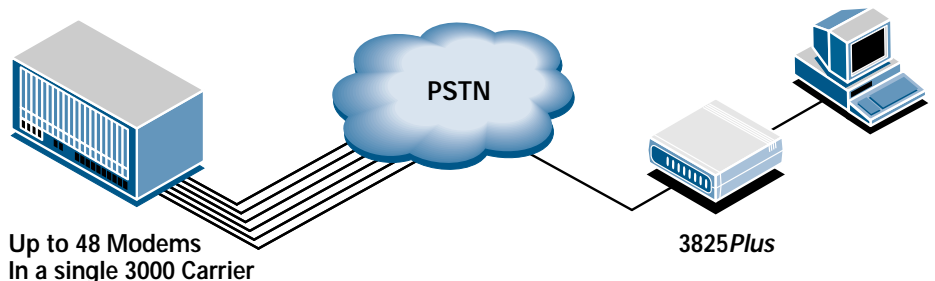


B E N E F I T S

- **SAVES TIME AND MONEY.** MAXIMIZES ALL CENTRAL SITE CONNECTIONS WITH V.34(+) SPEEDS UP TO 33.6 Kbps
- **SAVES SPACE, TRIPLES CARRIER PRODUCTIVITY.** CONTAINS THREE V.34(+) MODEMS, ALLOWING FOR UP TO 48 UNITS IN A SINGLE 3000 CARRIER
- **ENSURES DATA CLARITY IN WIRE AND WIRELESS APPLICATIONS.** SUPPORTS ENHANCED THROUGHPUT CELLULAR (ETC)
- **ECONOMICALLY EXTENDS FUNCTIONALITY.** ACCEPTS UPGRADES AND ENHANCEMENTS VIA SIMPLE SOFTWARE DOWNLOADS
- **SIMPLIFIES CONTROL.** QUICKLY CONFIGURE OR CLONE COMSPHERE MODEMS REMOTELY FROM A CENTRAL LOCATION
- **NETWORK MANAGED.** MANAGE, TEST, TROUBLESHOOT, AND GATHER INFORMATION FROM REMOTE COMSPHERE MODEMS WITH THE COMSPHERE 6700 NMS
- **SECURES DATA.** ORIGINATE, ANSWER, AND CALL BACK SECURITY FEATURES ARE BUILT IN
- **UNSURPASSED PERFORMANCE AND RELIABILITY.** 3821PLUS TECHNOLOGY HAS UNDERGONE EXTENSIVE TESTING TO ASSURE ACCURACY, RELIABILITY, AND UNSURPASSED COMPATIBILITY
- **UNPARALLELED SUPPORT.** 7 DAYS A WEEK, 24 HOURS A DAY; FULL 2-YEAR WARRANTY.

Paradyne's COMSPHERE 3821Plus modem is designed to save you time, money, and space — while providing you with the utmost in functionality, configurability, and ease of use. At V.34 with 33.6 Kbps, the COMSPHERE 3821Plus fax modem will optimize central site connections with any branded remote unit, saving you data transfer time and network tolls. Because it supports Enhanced Throughput Cellular (ETC[®]) protocol, you can be assured of optimal data speed in both wire and wireless applications. In addition, the COMSPHERE 3821Plus' high-density card design packs three modems on a single card, allowing you to put up to 48 modems in one 3000 Carrier, reducing space requirements by as much as 67 percent.

The COMSPHERE 3821Plus fax modem covers the full spectrum of central site and/or high-density dial requirements. Perfect for both mid-sized or large companies with local or distributed networks, the 3821Plus offers tremendous growth opportunity without a large initial investment. Besides being fast, economical, and space saving, the 3821Plus maximizes functionality with award-winning COMSPHERE Software-Defined (SD) architecture. The 3821Plus also incorporates exceptional security features to ensure that data confidentiality and integrity are never an issue. When you add the versatility of the COMSPHERE 6700 Network Management System and the remote accessibility of COMSPHERE 3800 modem products, the 3821Plus lets you control your network from virtually anywhere in the world! The 3821Plus is the ideal central site choice for speed, economy, and control. Combine it with COMSPHERE 3825Plus external units for superior results!



HIGH-DENSITY CENTRAL SITE SOLUTION

FEATURES

- AT 33.6 (V.34+) Kbps, NOTHING IS FASTER
- HIGH-DENSITY CARD INCORPORATES THREE V.34(+) MODEMS, 48 IN A SINGLE 3000 CARRIER
- SOFTWARE-DEFINED ARCHITECTURE
- REMOTE CONFIGURATION, CONTROL, AND STATUS VIA THE COMSPHERE 6700 NMS OR SHARED DIAGNOSTIC CONTROL PANEL
- SECURITY FOR ORIGINATE, ANSWER, AND CALL BACK DATA TRANSFERS
- ENHANCED THROUGHPUT CELLULAR (ETC) PROTOCOL
- FAX SUPPORTS GROUP 3, CLASS 1 AND CLASS 2 FAX
- DIALING CAPABILITIES INCLUDE: ITU V.25bis, AT COMMANDS, AND 6700 NETWORK MANAGEMENT OR SHARED DIAGNOSTIC CONTROL PANEL
- FULL COMPLEMENT OF SELF TESTS, LOCAL AND REMOTE LOOPBACKS, INCLUDING COMPLIANCE WITH ITU V.54

SPECIFICATIONS

Data Line Modulations

V.34+*, 33.6 Kbps, 31.2 Kbps Trellis Coded Modulation (TCM) synchronous/asynchronous
ITU V.34, 28.8 Kbps, 26.4 Kbps, 24 Kbps, 21.6 Kbps, 16.8 Kbps, 14.4 Kbps, 12 Kbps, 9.6 Kbps, 7.2 Kbps, 4.8 Kbps and 2.4 Kbps TCM, synchronous/asynchronous
V.32terbo*, 19.2 Kbps, 16.8 Kbps TCM, synchronous/asynchronous
ITU V.32bis, 14.4 Kbps, 12 Kbps, 9,600 bps, 7,200 bps TCM, 4,800 bps Quadrature Amplitude Modulation (QAM), synchronous/asynchronous
ITU V.32, 9,600 bps, 4,800 bps QAM, synchronous/asynchronous
ITU V.22bis, 2,400 bps QAM, synchronous/asynchronous
ITU V.22, 1,200 bps QAM, synchronous/asynchronous, Differential Phase-Shift Keyed (DPSK)
AT&T 212A 1,200 bps, synchronous/asynchronous, DPSK
AT&T 103J 300 bps, asynchronous, FSK
ITU V.21, 300 bps, asynchronous, FSK

Fax

Group 3, Class 1, Class 2, V.17, V.29, V.27ter

Auto-Mode

V.34+*, V.34, V.32terbo*, V.32bis, V.32, V.22bis, V.22, AT&T 212A, 103J

Auto Rate (Fall back/forward)

33.6 Kbps, 31.2 Kbps, 28.8 Kbps, 26.4 Kbps, 24 Kbps, 21.6 Kbps, 19.2 Kbps, 16.8 Kbps, 14.4 Kbps, 12 Kbps, 9,600 bps, 7,200 bps, 4,800 bps, and 4,800 bps

DTE Rates (Asynchronous)

115.2 Kbps, 76.8 Kbps, 57.6 Kbps, 38.4 Kbps, 28.8 Kbps, 19.2 Kbps, 14.4 Kbps, 12 Kbps, 9,600 bps, 7,200 bps, 4,800 bps, 2,400 bps, 1,200 bps, and 300 bps

DTE Interface

EIA/TIA 232E/ITU V.24/ISO 2110

Special Functions

3000-number password access security directory
V.13 Simulated Carrier Control
V.14 asynchronous-to-synchronous conversion
ETC

Dimensions

Weight: 1.5 lbs.
Height: 1"
Width: 7.37"
Depth: 14.37"

Error Control

ITU V.42
MNP 2-4

Data Compression

ITU V.42bis
MNP Class 5

Certification

Telco
FCC Part 6 (USA)
DOC (Canada)

Safety

UL (USA)
CSA (Canada)

Emissions

FCC Part 15, Class A

3000 Carrier Size

Height: 10.5"
Width: 19"
Depth: 14"

Installation of the 3821Plus requires a 3821 Kit Assembly for the 3000 Carrier. The Kit Assembly includes interface cards required to break out three DTE ports from the single modem card. Each Kit Assembly covers one-half of the 3000 Carrier, or eight cards (24 modems).

** V.34+ and V.32terbo are Paradyne proprietary modulations.*

A few more reasons to connect with Paradyne—the industry leader and winner of these awards for modem products.



MOD-3821-2-0297

For additional information on this or any Paradyne product or service, contact the office nearest you. Or, dial toll-free (USA and Canada) 800 482-3333 or call 813 530-8623. Fax (USA) 813 530-2103.

Toronto 905 709-5000 fax: 905 709-3469
Europe 44-1-753-515000 fax: 44-1-753-550011
Hong Kong 852 2543-0083 fax: 852 2541-3767
Singapore 65 355-5230 fax: 65 355-5244

Montreal 514 288-0001 fax: 514 288-1246
Japan 81 3-5541-6630 fax: 81 3-5541-6631
Latin America 813 530-8358 fax: 813 532-5240
Internet address <http://www.paradyne.com>

Specifications subject to change without notice. Printed in U.S.A. ©Paradyne Corporation 1997.

COMSPHERE and ETC are registered trademarks of Paradyne Corporation. PARADYNE is a trademark of Paradyne Corporation. All other products or services mentioned are the trademarks, service marks, registered trademarks, or registered service marks of their respective owners.

PARADYNE™